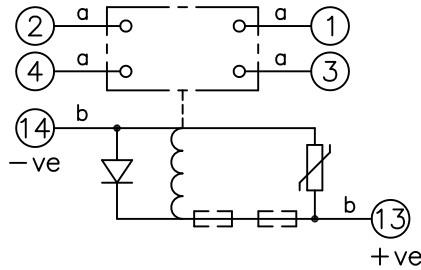


LOOKING ON FRONT OF RELAY



NOTE:

1. RESISTORS ARE NOT REQUIRED ON OTHER VOLTAGE VARIATIONS.
- * 2. THE AR141T2 125VDC & 240VDC VERSIONS MUST HAVE RESISTOR 2101C21471 FITTED INSTEAD OF THE ONE SPECIFIED ON CHART. SEE RELEVANT B.O.M.
3. HEAVY DUTY CONTACTS ARE FITTED WITH BLOWOUT MAGNETS AND ARE POLARITY CONSCIOUS, SEE TABLE BELOW FOR +VE TERMINAL.

KEY	125	* 2101C21102 ONLY.	NIL.	SEE NOTE 2 *	ASSEMBLY WIRES USED		
	240	* 2101C21102 +EXT. RES.	EXT. RES. ONLY	SEE NOTE 2 *	a	2107B10003 4 OFF	
○○ make contact □□ break contact □○□○ c/o contact ② ext. conn ┌─┐ plug bridge └─┘ - shorting ⊙ metering point ┌───┐ 5Kv barrier └───┘ □□ test socket - shorting ⊙ plug & socket	VDC	RES.(T1,T2,T3,T6).	RES.(T4).	REMARKS	b	2107D10164 2 OFF	
	CONTACT CONFIG.	OUTPUT CONTACT PAIR / TERMINAL No.					
		1-3	2-4	5-7	6-8	9-11	10-12
	2M	M	M				
	1M 1B	M	B				
	2B	B	B				

NOT SUBJECT TO UPDATE
ONCE COPIED / PRINTED
OR DOWNLOADED

FRAME REFERENCE: E2FAQQ.
FRAME TERMINAL BLOCK ASSY: -
ASSEMBLY INSTRUCTIONS: -
 TYPICAL ASSEMBLY DRAWING 2995G10032.
 AT INDICATED POSITIONS FIT AS FOLLOWS:
 T - FIT TRIP ISOLATION CONTACT 2995B10053
 S - FIT STANDARD CONTACT 2995B10054
 SECURE CONTACTS USING FIXING SCREW 2109F99009.
 POSITIONS SHOWN BLANK ARE UNUSED

2	T	T	1
4	T	T	3
6	T	T	5
8	T	T	7
10			9
12			11
14	S	S	13
16			15
18			17
20			19
22			21
24			23
26			25
28			27

VIEW FROM NUMBERED
SIDE OF BLOCK

OUTER TERMINAL BLOCK ASSY: -
ASSEMBLY INSTRUCTIONS: -
 TYPICAL ASSEMBLY DRAWING 2995G10029.
 AT INDICATED POSITIONS FIT AS FOLLOWS:
 S - FIT STANDARD CONTACT 2995B10051
 HC - FIT 'HEAVY CURRENT' KIT 2995G10030
 WHERE ○○ IS SHOWN FIT CT SHORTING
 KIT 2995G10031
 POSITIONS SHOWN BLANK ARE UNUSED.
 ALL POSITIONS FIT SCREW 2106F12506.

2	S	S	1
4	S	S	3
6	S	S	5
8	S	S	7
10			9
12			11
14	S	S	13
16			15
18			17
20			19
22			21
24			23
26			25
28			27

VIEW FROM INSIDE
FACE

Copyright © 2002 VATECH REYROLLE ACP Ltd. Hebburn

			Title. TERMINAL BLOCK & WIRING DIAGRAM FOR AR1-1T-D 2C RELAYS IN E2 CASE.	First used on:	
				Similar Articles:	
				Supersedes:	
2 RDW	03/03/10	MN112/3260 JB	VATECH REYROLLE	Original Scale.	Drq.No.
1	15/04/02		AUTOMATION, CONTROL & PROTECTION	.	2112W50128
ISSUE	DATE	MOD.No.			
DRAWN: A.LAW.	CHECKED:	APPROVED: R.D.WATSON	DATE: 17/07/02	IE:	OPS: